

CHRIS VAN UFFELEN

# *Posh & Proud*

INTERIOR DESIGN DELUXE





The owner's wish for a "timeless classic villa" established the building's style of a playful British castle. This task fell to Neugebauer architects, along with the challenge of combining classic style with modern architecture. Their aim was to realize a building for three residents that embodies both modern and traditional characteristics.

The villa in Wiesbaden features a gabled roof, which has a modern, but still classical appearance. The strict window arrangement emphasizes tradition and is decisive for the inner organization. The strong topography and the generosity of the site enables the building to frame vegetation and sloping natural walls, position it in the foreground. To fulfill the owner's wishes, spacious private rooms were created on the ground floor. The central terrace graced by stylish lounge furniture is accessible from the kitchen and dining area, and offers view of the generous garden.

On the lower level are service rooms, a garage, a wellness and sauna area, getting light from the sloping yard with a whirlpool. The upper level is separated into two parts. One is a separate area for the son with a bathroom and a dressing room. The other one contains a large bathroom, dressing room and a master bedroom. Small balconies offer views of the garden. All stories are connected by a formal staircase in the center of the building. An additional elevator makes barrier-free exploitation of all stories possible. This is a building which emphasizes simplicity and independence, but combines these with traditional characteristics.



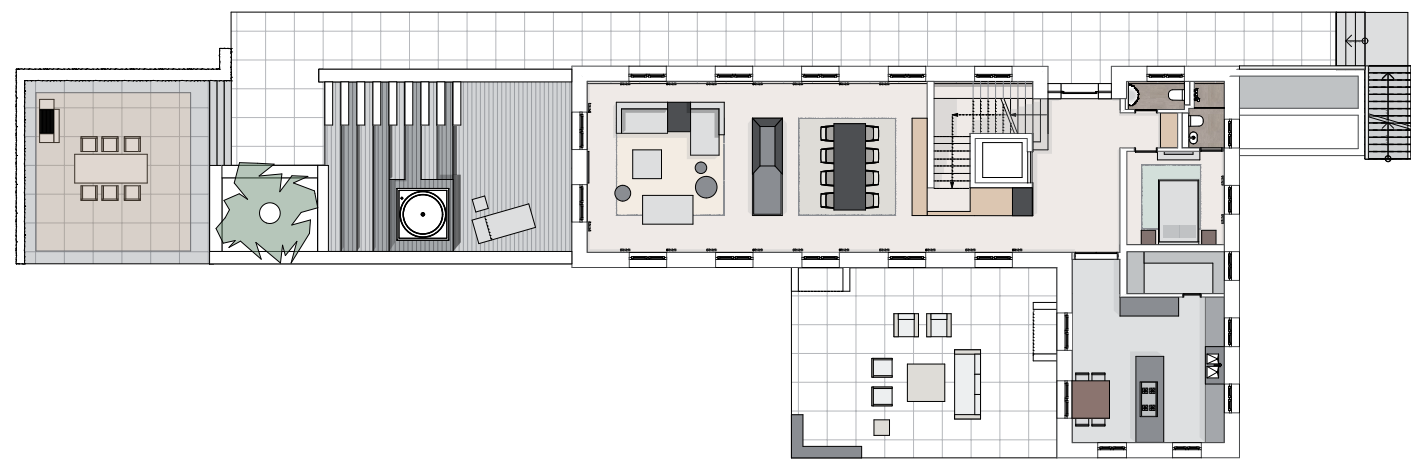
# WHEN TRADITION MEETS MODERN SPIRIT...

Wiesbaden



The living and dining area are separated by an eye-catching fireplace and form, in combination with the kitchen, the heart of the villa.





The thick, heavy door and the clinker façade contrast transparent glass. Throne-like, the Joop armchair playfully fits in with its surrounding. This shiny La Cornue Kitchen invites you to come closer, test the utensils and start cooking a five-course menu.





Project: Timeless Classic Villa. Designer: Neugebauer Architekten BDA. Location: Wiesbaden, Germany. Year of completion: 2015. Size: 465 sqm. Furniture: kitchen by La Cornue, sofa beds by Wiener Werkstätte, armchair by Joop, curtain by Hermès, chandelier by Baccarat. Photos: Aleksandr Frolenko.

